

# Planning Committee

Date: **20 May 2020**

Time: **2.00pm**

Venue **Skype Meeting**

Members: **Councillors:** Hill (Chair), Littman (Opposition Spokesperson), C Theobald (Group Spokesperson), Childs, Fishleigh, Janio, Mac Cafferty, Miller, Shanks and Yates

Conservation Advisory Group Representative

Contact: **Penny Jennings**  
Democratic Services Officer  
01273 291065  
[penny.jennings@brighton-hove.gov.uk](mailto:penny.jennings@brighton-hove.gov.uk)

Agendas and minutes are published on the council's website [www.brighton-hove.gov.uk](http://www.brighton-hove.gov.uk).  
Agendas are available to view five working days prior to the meeting date.

Electronic agendas can also be accessed through our meetings app available through ModernGov: [iOS/Windows/Android](#)

This agenda and all accompanying reports are printed on recycled paper

# AGENDA

## PART ONE

## Page

---

### 139 TO CONSIDER AND DETERMINE PLANNING APPLICATIONS

1 - 18

*Please note that the published order of the agenda may be changed; major applications will always be heard first; however, the order of the minor applications may be amended to allow those applications with registered speakers to be heard first.*

The City Council actively welcomes members of the public and the press to attend its meetings and holds as many of its meetings as possible in public. Provision is also made on the agendas for public questions to committees and details of how questions can be raised can be found on the website and/or on agendas for the meetings.

The closing date for receipt of public questions and deputations for the next meeting is 12 noon on the fourth working day before the meeting.

Meeting papers can be provided, on request, in large print, in Braille, on audio tape or on disc, or translated into any other language as requested.

Infra-red hearing aids are available for use during the meeting. If you require any further information or assistance, please contact the receptionist on arrival.

### **FURTHER INFORMATION**

For further details and general enquiries about this meeting contact Penny Jennings, (01273 291065, email [penny.jennings@brighton-hove.gov.uk](mailto:penny.jennings@brighton-hove.gov.uk)) or email [democratic.services@brighton-hove.gov.uk](mailto:democratic.services@brighton-hove.gov.uk)

### **WEBCASTING NOTICE**

This meeting may be filmed for live or subsequent broadcast via the Council's website. At the start of the meeting the Chair will confirm if all or part of the meeting is being filmed. You should be aware that the Council is a Data Controller under the Data Protection Act 1998. Data collected during this web cast will be retained in accordance with the Council's published policy.

Therefore, by entering the meeting room and using the seats in the chamber you are deemed to be consenting to being filmed and to the possible use of those images and sound recordings for the purpose of web casting and/or Member training. If members of the public do not wish to have their image captured, they should sit in the public gallery area.

### **ACCESS NOTICE**

The Public Gallery is situated on the first floor of the Town Hall and is limited in size but does have 2 spaces designated for wheelchair users. The lift cannot be used in an emergency. Evac Chairs are available for self-transfer and you are requested to inform Reception prior to going up to the Public Gallery. **For your own safety please do not go beyond the Ground Floor if you are unable to use the stairs.**

Please inform staff on Reception of this affects you so that you can be directed to the Council Chamber where you can watch the meeting or if you need to take part in the proceedings e.g. because you have submitted a public question.

### **FIRE / EMERGENCY EVACUATION PROCEDURE**

If the fire alarm sounds continuously, or if you are instructed to do so, you must leave the building by the nearest available exit. You will be directed to the nearest exit by council staff. It is vital that you follow their instructions:

- You should proceed calmly; do not run and do not use the lifts;
- Do not stop to collect personal belongings;
- Once you are outside, please do not wait immediately next to the building, but move some distance away and await further instructions; and
- Do not re-enter the building until told that it is safe to do so.



# **West Slope, University Of Sussex**

**BH2020/00011**



**Brighton & Hove  
City Council**

# Application Description

---

Demolition of Park Village, Lancaster, York, Kulukundis and Kent Houses (total of 852 bed spaces) and health centre and erection of 23no buildings ranging from 1 to 6 storeys comprising new student residences (total of 1899 bed spaces including 20 family units) and ancillary uses including new health & well-being centre, Pavilion Library, retail and restaurant/cafe together with new focal landscaped space, wider landscaping and tree planting & improved pedestrian access

# City context

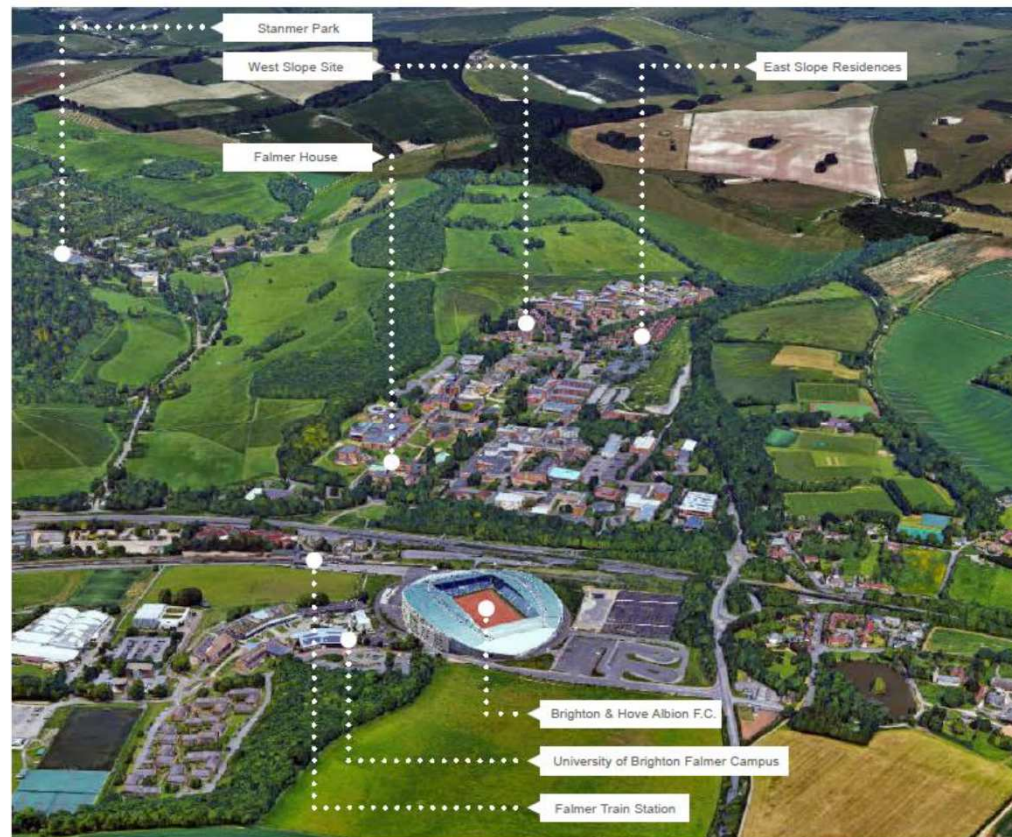


Brighton & Hove  
City Council

# Contextual Site Plan



# Contextual Aerial



# Aerial photo(s) of site



# 3D Aerial photo of site

---



# Other photo(s) of site



Falmer House, the Grade I listed Spence centrepiece building



Fulton Court, the heart of Spence's academic group of listed buildings

# **West Slope, University Of Sussex**

**BH2020/00011**



**Brighton & Hove  
City Council**

# Photo(s) of site

---



# Split of uses/Number of units

---

## Purpose Built Student Accommodation

| PBSA type | %    |
|-----------|------|
| Villas    | 19.5 |
| Clusters  | 55.6 |
| Townhouse | 23.5 |
| Family    | 1.1  |

*Please note that the Villas and Cluster have the same layout representing 75.1% of student accommodation.*

## Non residential uses

| Use Type                    | Sq.m | Building |
|-----------------------------|------|----------|
| Supermarket                 | 800  | 24       |
| Café and retail             | 604  | 24       |
| Pavillion Library           | 1771 | 19       |
| Social hub with laundry     | 293  | 08       |
| Health and Wellbeing centre | 1346 | 23       |

# Existing Location Plan

---



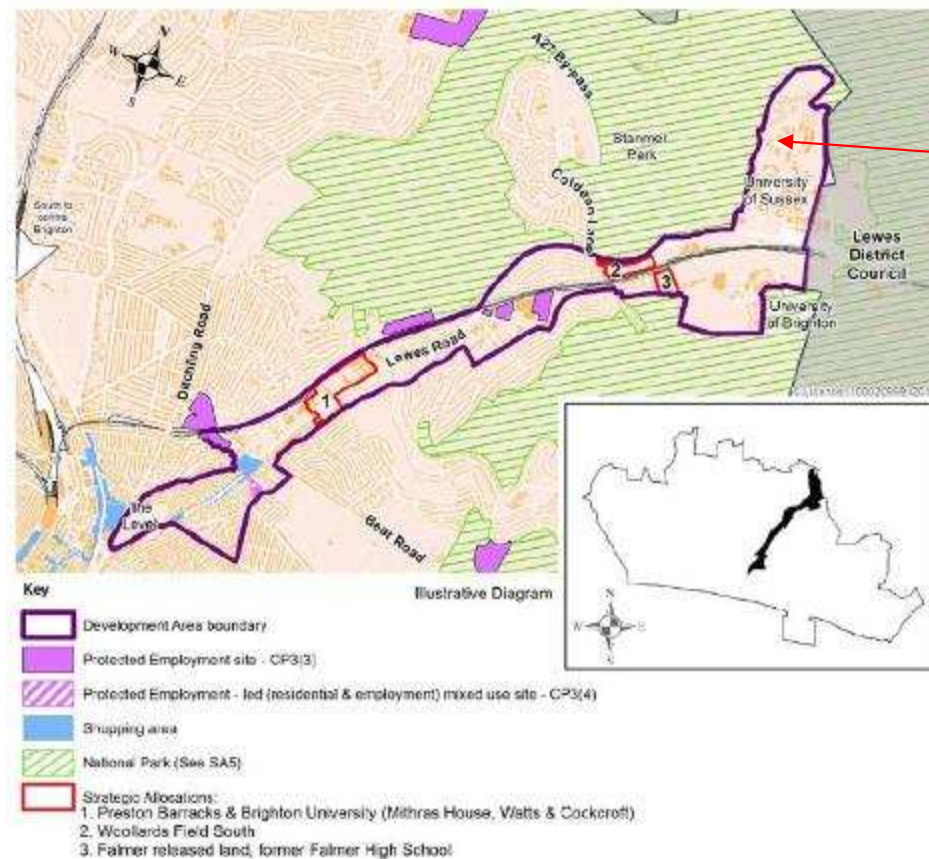
# Proposed Location Plan



HA1

# City Plan Part 1 DA3 Allocation

## DA3 – Lewes Road Area



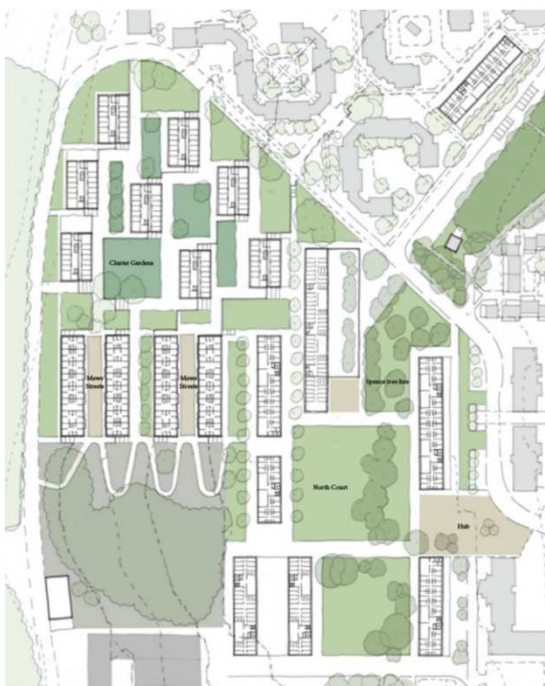
Site



# Approved 2015 Masterplan



# Evolution of design



Brighton & Hove  
City Council

## **2 Character Areas- West Slope and North Court**

